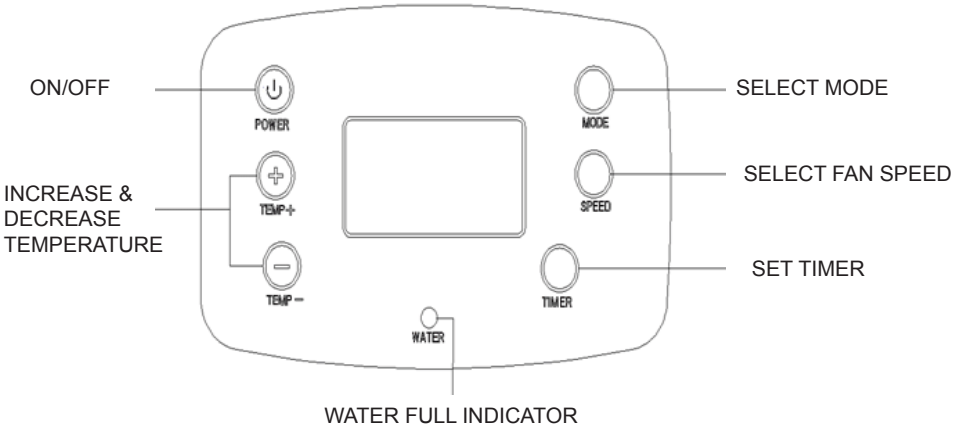


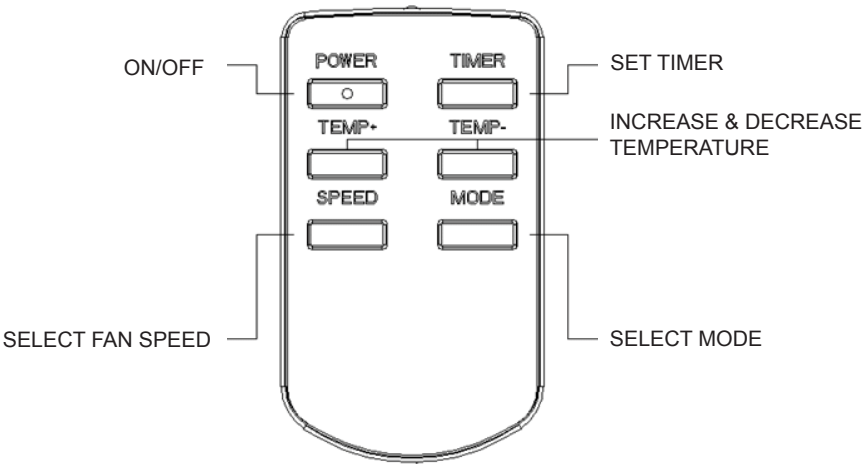
# Users manual

Portable air conditioner CB-17

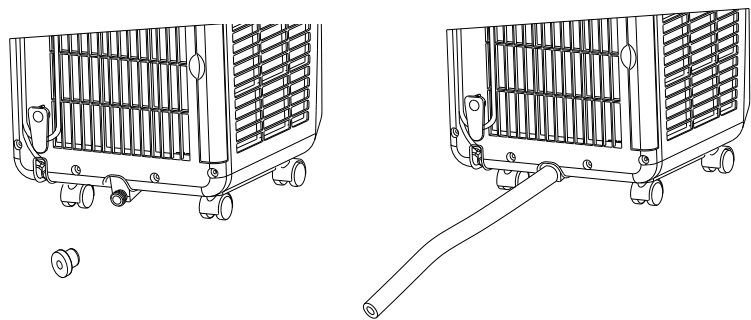
**A. Control panel**



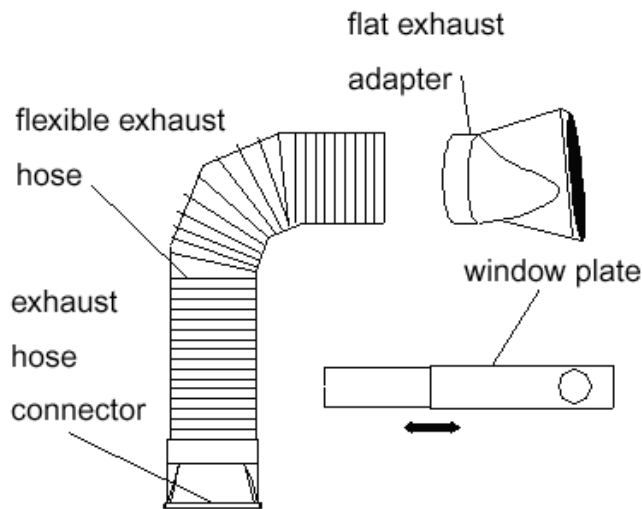
**B. Remote control**



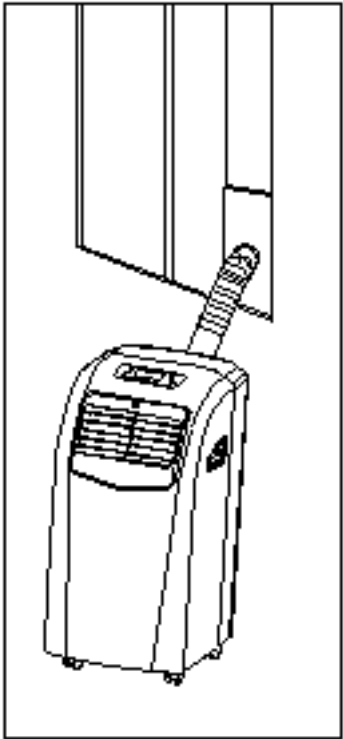
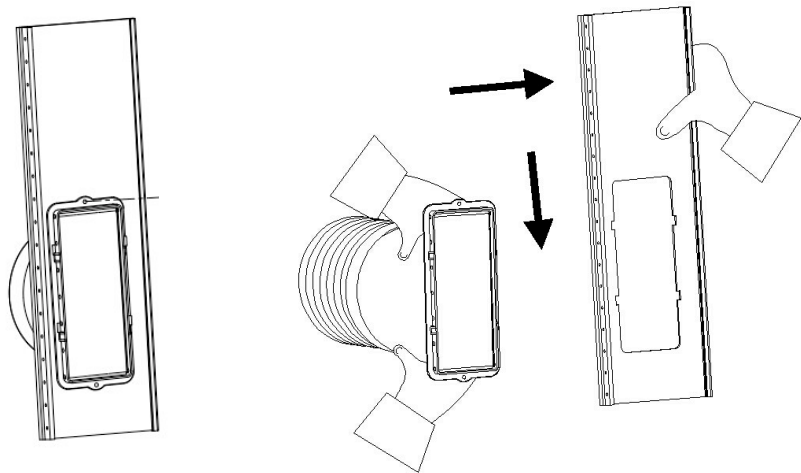
**C. Water tank and water hose connection**



**D. Exhaust hose**



**E. Window kit**



## *Users manual HACE air conditioner CB17*

### **Table of contents**

2	.....	<i>Technical drawings</i>
6	.....	<i>English</i>
9	.....	<i>Swedish</i>
12	.....	<i>Danish</i>
15	.....	<i>Norwegian</i>

*Please read this manual carefully before installing and using your air conditioner.  
Store the manual in a safe place for future reference and product warranty.*

**[www.tesscandinavia.se](http://www.tesscandinavia.se)**



## Security warnings:

- The unit must be installed in accordance with national wiring regulations.
- If the power cord is damaged, it must be replaced by qualified personnel.
- Children should not play with the unit.
- The unit is for indoor use only.
- Do not switch the unit off by unplugging its power cord.
- Do not put any objects into the unit's air inlet or outlet.
- Keep the unit away from water sources.
- Place the unit on a flat and solid surface.
- Keep the unit away from heat sources and inflammable goods.
- Do not use the unit in cooling mode if the ambient temperature is above +35°C.
- The maximum length of the exhaust hose is 1500 mm. Do not extend or use a longer hose as this might seriously damage the air conditioner.
- Do not bend or flex the exhaust hose more than 45° to ensure sufficient air flow.
- The remote control uses

AAA batteries. Use alkaline batteries only. Do not use rechargeable batteries.

## Installation

- If the unit has been transported horizontally, keep it in an upright position for 2 hours before using it.
- Place the unit on a flat and solid surface.
- Do not install the unit in bathrooms or other wet environments.
- Make sure that air flow isn't blocked - always keep at least 50 cm distance to surrounding surfaces.

### Installing the exhaust hose

- Attach the adapter to one end of the hose and connect the other end to the back of the air conditioner.
- Extend the exhaust hose and lead it outside through a door or window.

### Using the window kit

- To use the window kit, open the window and place the window kit either horizontally or vertically, depending on the window.
- Adjust the length of the window kit. Shut the window and attach the

adapter on the exhaust hose to the window kit.

## Protection functions

### Automatic defrost

The unit will automatically defrost when needed.

### Compressor protection

The unit has a compressor protection function causing a 3-minute start delay after the unit is restarted.

### Water full alarm

When the water tank is full, the unit will stop working and a water-full indication light is shown. Empty the water tank and restart the unit.

## Operating instructions

### 1. Starting the unit

Press the POWER button to start and stop the unit.

### 2. Select mode

The unit has 3 different modes; cooling, auto, and dry mode. Press MODE on the control panel or remote control to select mode.

### Cooling mode

Set desired temperature with the TEMP + and TEMP - buttons on the control panel or the remote control.

Set temperature is shown in the display for few seconds. After, the display returns to show the room temperature. Select fan speed with the SPEED button.

### **Dry**

In dry mode the unit will dehumidify the room. Fan speed and temperature cannot be set. Do not use the air exhaust hose when using the unit in dry mode.

### **Auto**

In auto mode, the unit will automatically set mode depending on the room temperature

Room temperature below 23°C: Only the fan runs

Room temperature between 23-26°C:  
Dry mode

Room temperature above 26°C: Cooling mode

### **3. Set timer**

Press the TIMER button one time to set time for automatic shut off. Press it again to set time for automatic start.

Set time with the TEMP + and TEMP - buttons on the control panel or remote control

### **4. Set fan speed**

Press the SPEED button on the control panel or remote control to choose fan speed.

### **Connecting a water hose for direct drainage**

Unscrew the drain cover and remove the water stopper. Attach a 13 mm water hose to the pipe on the unit. Lead the other end of the water hose to a drain. Make sure that the water can be drained downwards.

### **The air filters**

The air filters keep dust and dirt from entering the air conditioner.

It is very important that the filters are cleaned regularly; otherwise the unit may be seriously damaged. Therefore, clean the filters at least once every two weeks.

### **Filter cleaning**

- Remove the back and side filters.
- Clean the filters with warm water and a mild detergent.
- Make sure that the filters are fully dried before reinserting them.

### **Maintenance and storage**

- Clean the body of the unit with a soft cloth. Do not use strong solvents as this might damage the surface of the unit.
- Store the unit in a dry environment, away from direct sunlight. Drain the water before storage.

### **Warranties and service**

2 years product warranty. The warranty is only valid with proof of purchase.

For all service and warranty claims, you should first contact your retailer.

## **Water drainage**

### **Empty the water tank**

Remove the water stopper. Empty the water tank and re-attach the water stopper.

## Trouble shooting

If you are having trouble with your unit, please refer to below trouble shooting.  
If nothing of the below works, please contact your retailer for servicing of your unit.

<b>Problem</b>	<b>Cause</b>	<b>Solution</b>
The unit doesn't start	Is the power cord connected?	Connect the power cord
	Is the water tank full?	Empty the water tank
	Is the room temperature above 35°C or below 10°C?	Increase or decrease the room temperature
	Is the room temperature lower than set temperature?	Change set temperature
Bad cooling effect	Is the unit placed in direct sunlight?	Move the unit or close the curtains
	Are the doors or windows open?	Close doors and windows
	Are the filters dirty?	Clean the filters
	Is the air inlet or outlet jammed?	Make sure that air flow isn't blocked
High noise level	Is the unit placed on an uneven ground?	Place the unit on a flat and solid ground
The compressor doesn't work	Overheat protection is activated	Wait until the temperature decreases, the unit will automatically restart
The remote control doesn't work	Too long distance or the remote control isn't aimed at the unit?	Bring the remote control closer and aim it towards the unit
	Does the batteries need replacing?	Replace the batteries
Error code E0	Tube temperature sensor problem	Contact retailer
Error code E2	The water tank is full	Empty the water tank.





KLIMASKLEP  
ul. Orzechowa 3  
72-010 Przęsocin (koło Szczecina)

tel.: (91) 432-43-42  
tel.: (91) 432-43-49

e-mail: [sklep@klimasklep.pl](mailto:sklep@klimasklep.pl)  
www: [www.KlimaSklep.pl](http://www.KlimaSklep.pl)